

# TOP HOMES

2014/2015  
HOUSING INDUSTRY  
ASSOCIATION AWARDS



VICTORIA'S  
HONOUR ROLL

BEST DESIGNS  
& INNOVATIONS

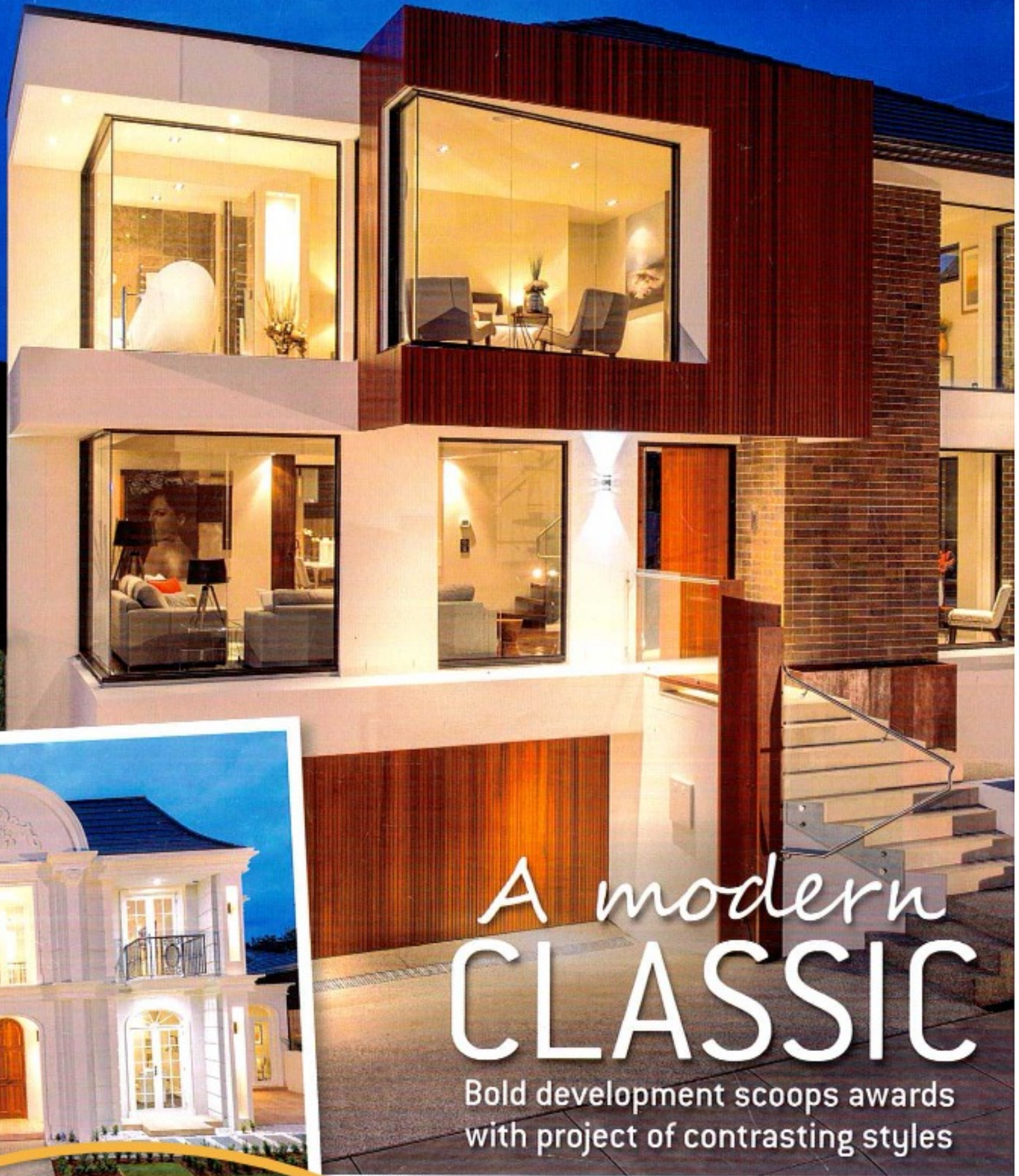
RENOVATIONS  
& ADDITIONS

KITCHENS  
& BATHROOMS

DISPLAY HOMES

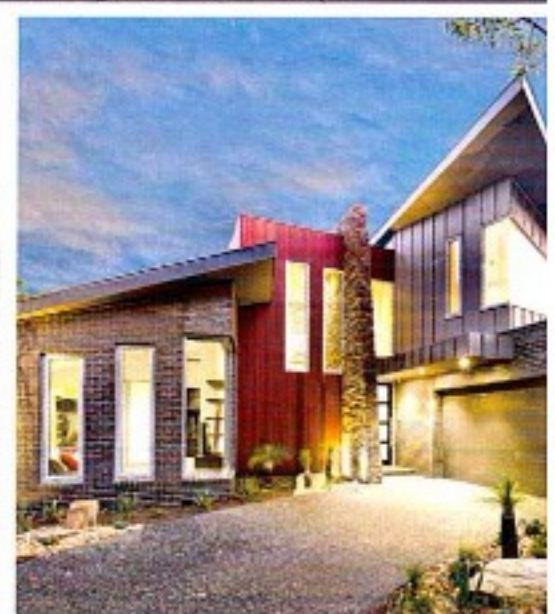
CUSTOM DESIGNS

PROJECT HOMES



## *A modern* CLASSIC

Bold development scoops awards  
with project of contrasting styles



# Contents



18



28

32



16



34



50

- 13 Welcome
- 14 Award partners
- 16 2014 HIA-CSR Victorian Home of the Year & Display Home winner

## DISPLAY HOMES

- 18 Up to \$250,000 winner
- 21 Up to \$250,000 runner-up
- 22 \$250,001-\$300,000 runner-up
- 23 \$250,001-\$300,000 winner
- 24 \$300,001-\$350,000 winner
- 26 \$300,001-\$350,000 joint runners-up
- 27 \$350,001-\$400,000 winner
- 28 \$350,001-\$400,000 runner-up
- 29 \$400,001-\$500,000 winner
- 30 \$400,001-\$500,000 runner-up
- 31 \$500,001-\$600,000 runner-up
- 32 \$600,001+ winner
- 33 \$600,001+ runner-up
- 34 *Herald Sun Home* magazine Readers' Choice Award winner

## CUSTOM BUILT HOMES

- 34 Overall winner/\$1 million-\$2 million winner
- 37 Up to \$500,000 winner
- 38 Up to \$500,000 runner-up
- 39 \$500,001-\$1 million winner
- 40 \$500,001-\$1 million runner-up
- 41 \$2 million+ winner
- 42 \$1 million-\$2 million runner-up
- \$2 million+ runner-up

## SPEC HOMES

- 44 Overall winner

## PROJECT HOMES

- 46 Overall winner/\$400,001+ winner
- 48 Up to \$400,000 winner
- 49 Up to \$400,000 runner-up

## RENOVATION/ADDITION PROJECTS

- 50 Overall winner/\$1 million+ winner
- 52 Up to \$300,000 winner
- 54 Up to \$300,000 runner-up
- \$300,001-\$500,000 runner-up
- 55 \$300,001-\$500,000 winner
- 57 \$500,001-\$700,000 winner
- 58 \$500,001-\$700,000 runner-up
- 59 \$700,001-\$1 million winner
- 60 \$700,001-\$1 million runner-up
- 61 \$1 million+ runner-up

## TOWNHOUSE VILLA DEVELOPMENTS

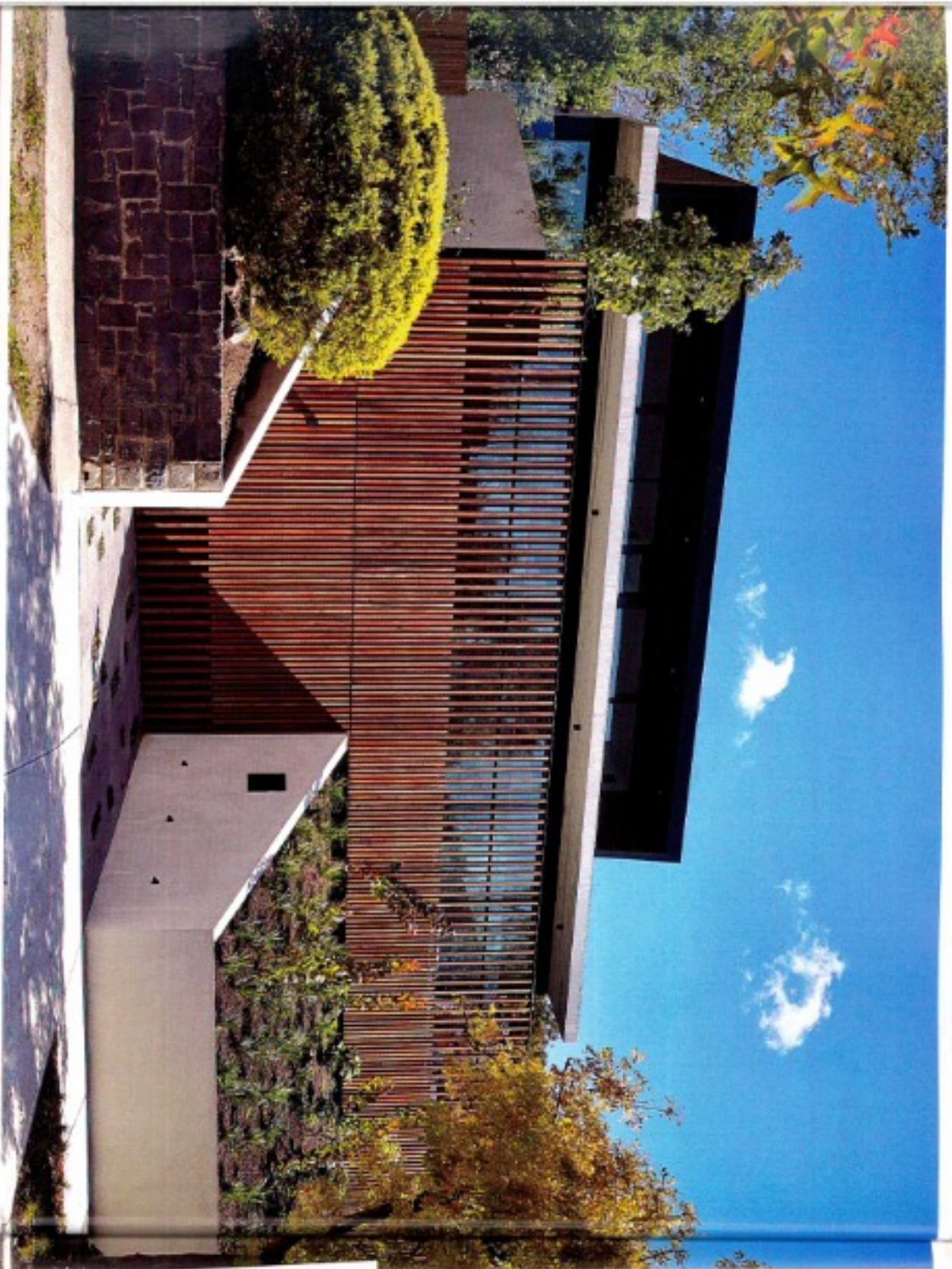
- 62 Overall winner/\$700,001+ per dwelling winner
- 64 Up to \$700,000 per dwelling winner
- 65 Up to \$700,000 per dwelling runner-up
- \$700,001+ per dwelling runner-up

## TOWNHOUSE VILLAS

- 66 Overall winner

# Winner

OVERALL CUSTOM BUILT HOME OF THE YEAR  
& CUSTOM BUILT HOME \$1 MILLION-\$2 MILLION



THE JUDGES NOTED  
"A WOW FACTOR ON  
EACH LEVEL WITH  
BOTH DESIGN  
ELEMENTS AND  
USE OF MATERIALS"



**BUILDER**  
BCG Constructions  
**PHONE**  
(03) 9421 4666  
**WEB**  
bcgcon.com.au  
**ARCHITECT/  
DESIGNER**  
Michael Larinoff



## BCG CONSTRUCTIONS

This ultra-modern, two-story home is nothing short of exceptional. Built over a two-car basement, the design of the home maximises the elevated site. The view from the east-facing facade is of the leafy green treetops of the surrounding parklands. The steeply sloped site enabled the basement to be built on grade with the street and the integrated Quartz-rendered swimming pool with spa, providing a secluded private open terrace.

The ground floor comprises the children's bedrooms; an elegant open-plan kitchen with Corian island benches, an integrated Corian double sink and sliding mirrored door mechanisms; dining and living areas as well as a rumpus room, powder room and laundry. Upstairs the spacious master bedroom comes complete with a striking ensuite showcasing Italian white marble tiles to both floor and walls, and a sunken double shower that doubles as a bath. The luxuries include a private yoga/meditation room; video intercom system with access control to the entry gate; velvet render finish to external walls and the internal entry area; sawn Chinese bluestone pavers to the driveway, entry and terrace area; plus custom-built joinery throughout the home – and the list goes on.

The judges commented on the "clever use of space and design that maximises the sloping site". They noted a "wow factor on each level with both design elements and use of materials.

"(The builders) have used superbly thought out construction methods; amazing pre-construction planning and an extremely high attention to detail, which is all reflected in the final product," they said.

PARTNER



## CUSTOM BUILT HOME OVER \$2 MILLION

Winner



### BCG CONSTRUCTIONS

This one-of-a-kind home was a lifelong ambition of its owners. Having lived abroad for many years with an extensive collection of art, antique timber furniture and screens, the owners engaged architect Haluk Aysu. With his design, this beautiful 'China Modern' themed home was born. A striking oriental red front door and water feature with stepping stone pavers sets the tone of the home. The living space, inspired by a Chinese pavilion, provides a sense of openness with its floor-to-ceiling windows looking out to an ornamental style garden. A long hallway lined with artefacts leads to the master bedroom and ensuite, which features an elegant granite bath and vanity. An internal courtyard beyond leads through to an indoor swimming pool complete with a red circular moon gate. Upstairs the guest area includes two bedrooms and a library. A third guest bedroom doubles as an art studio.



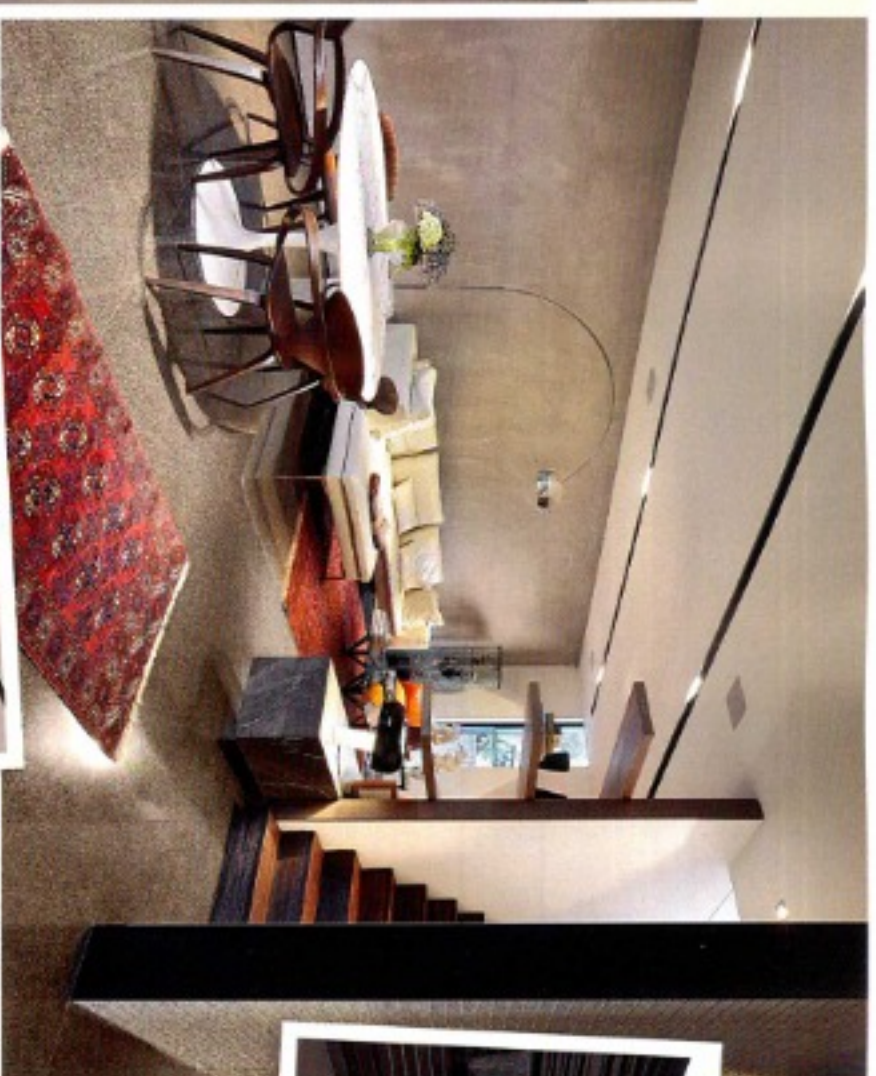
**BUILDER**  
BCG Constructions  
**PHONE**  
(03) 9421 4666  
**WEB**  
bcgcon.com.au  
**ARCHITECT/  
DESIGNER**  
Haluk Aysu

**PARTNER**

**smeg**  
technology with style

# Winner

## TOWNHOUSEVILLA OF THE YEAR



**BUILDER**  
BCG Constructions  
**PHONE**  
(03) 9421 4566  
**WEB**  
bcgcon.com.au  
**ARCHITECT/  
DESIGNER**  
Michael Larsoff

This contemporary townhouse is the ultimate in fine detailing. The basement boasts a three-car garage, gym, laundry, cellar, bathroom and two bedrooms opening on to a private courtyard. Heated polished concrete floors are a striking feature. Upstairs houses the master bedroom, walk-in robe and ensuite, along with a second bedroom and ensuite. The kitchen has stone benchtops, Miele appliances and butler's pantry. Windows and sliding doors throughout are double glazed in black aluminium frames. The eye-catching facade is a combination of rusted corten metal cladding, split-faced bricks, ironbark board and battened timber cladding. "This dwelling demonstrates excellent innovation throughout, with a CBUS automation system, pre-wired for computer network, phone and Foxtel," the judges said. "Externally the open timber decking allows for rainwater to be collected in an 'under tray' and then dispersed."



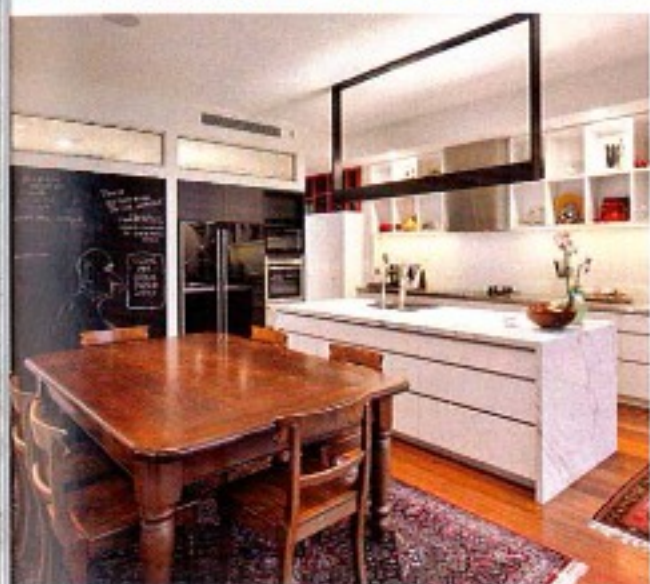
"THIS DWELLING DEMONSTRATES EXCELLENT INNOVATION THROUGHOUT"



**PARTNER**



## RENOVATION/ADDITION PROJECT OVER \$1 MILLION



**BUILDER**  
BCG Constructions  
**PHONE**  
(03) 9421 4666  
**WEB**  
[bcgcon.com.au](http://bcgcon.com.au)  
**ARCHITECT/  
DESIGNER**  
Dawson Tanner Architects



## Runner-Up

### BCG CONSTRUCTIONS

This four-storey townhouse was once a three-storey office building. Converted to a contemporary light-filled two-bedroom home, this build has seen the removal of a substantial portion of the structural steel frame and timber wall framing. Serviced by a glass enclosed central lift, it has a stand-alone office with separate entry, a 2000-bottle wine cellar, solar hydronic heating, intercom system, retractable roof blinds to upper decks, open-plan kitchen with large butler's pantry and family room with gas fireplace and glass facades.

### PARTNER

**TECHNIKA**  
COOKING WITH PASSION

## TOWNHOUSE/VILLA DEVELOPMENT OVER \$700,001 PER DWELLING

## Runner-Up



**BUILDER**  
BCG Constructions  
**PHONE**  
(03) 9421 4666  
**WEB**  
bcgcon.com.au  
**ARCHITECT/  
DESIGNER**  
Michael Larionoff



### BCG CONSTRUCTIONS

This three-townhouse development boasts cutting-edge design and construction with a commitment to quality appointments and meticulous attention to detail throughout. All have gallery-like interiors spread over three levels. Heated polished concrete floors, bespoke joinery, stone surfaces and timber claddings are striking features throughout the development. Other features include 'Green Heat' hydronic heating, refrigerated cooling, 10,000L water storage and auto garden irrigation system.

PARTNER

